

TEST ITEMS

Basic blood-gas	Haematology	Electrolyte	Biochemistry
pH, pCO <sub>2</sub> , pO <sub>2</sub>	Hct	K <sup>+</sup> , Na <sup>+</sup> , Ca <sup>++</sup> , Cl <sup>-</sup>	Glu, Lac

CALCULATION PARAMETERS

Total 24 Parameters:

cH<sup>+</sup>, cH<sup>+</sup>(T), pH(T), pCO<sub>2</sub>(T), pO<sub>2</sub>(T), HCO<sub>3</sub><sup>-</sup>atd, HCO<sub>3</sub><sup>-</sup>std, BB(B), BE(B), BE(ecf), ct CO<sub>2</sub>, Ca<sup>++</sup>(7.4), AnGap, tHb(est), sO<sub>2</sub>(est), pO<sub>2</sub>(A-a), pO<sub>2</sub>(A-a)(T), pO<sub>2</sub>(a/A), pO<sub>2</sub>(a/A)(T), RI, RI(T), pO<sub>2</sub>/FI O<sub>2</sub>, pO<sub>2</sub>(T)/FI O<sub>2</sub>, POP

TEST PACKAGES

Cat. No.	Test Item	Qualification
W461	K <sup>+</sup> , Na <sup>+</sup> , Ca <sup>++</sup> , Cl <sup>-</sup>	CE NMPA
W465	pH, pCO <sub>2</sub> , pO <sub>2</sub> , K <sup>+</sup> , Na <sup>+</sup> , Cl <sup>-</sup> , Ca <sup>++</sup> , Hct	CE NMPA
W466	pH, pCO <sub>2</sub> , pO <sub>2</sub> , K <sup>+</sup> , Na <sup>+</sup> , Cl <sup>-</sup> , Ca <sup>++</sup> , Hct, Glu, Lac	CE NMPA



**Fight for time and grab treatment opportunity for critical patients whenever wherever!**

**Blood Gas Analyzer**  
 • Reliable • Portable • Accurate • Efficient



**BGA-102**

CE NMPA

# 1 BENIFITS

## Automatic Sampling Process

Without manual operation, the procedure is more simple.

## Maintenance Free

Compact instrument design, no internal liquid path, no need for maintenance.

## Easy To Use

Only two steps are required to complete one sample test.

## Accurate Results

Good correlation with the Radiometer and help doctors make a diagnosis.

## Carry With Ease

Small and light, humanized handle makes it easier to carry.



302(L)\*226(W)\*180(H) mm  
No more than 6.5 kg  
(including battery but no power adapter)

### Design advantages make it adapt to different scenarios.



Battery powered



Built-in Printer



LIS Connect Function



Operate Video

# 2 APPLICATION SCENARIOS

## Necessary equipment for medical institutions to treat critically ill patients.



ICU/CCU/NICU



ER



OR



Pneumology Department



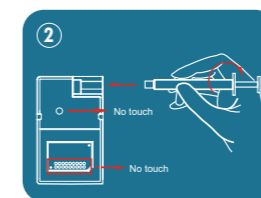
Ambulance

# 3 OPERATION

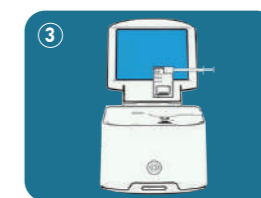
## Two-steps operation, One complete test.



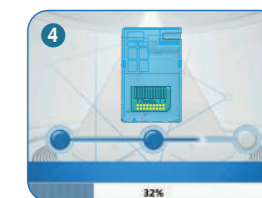
Sampling



Connecting



Inserting

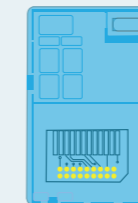


Reading

# 4 COMPONENTS

## Less product component, better user experience.

Test Card



### One test card, multiple solutions.

- Sample Type: Arterial Whole Blood
- Sample Volume: 80  $\mu$ L
- Test Time: 45 s
- Store at room temperature for up to 12 months
- Suitable for syringe

Reagent Pack



- Storage Condition: 2~8°C
- Shelf Life: 12 months
- Installed Life:  
10 parameters: 45 days  
8 parameters: 60 days

Quality Control



- 3 levels quality control analysis
- External quality control