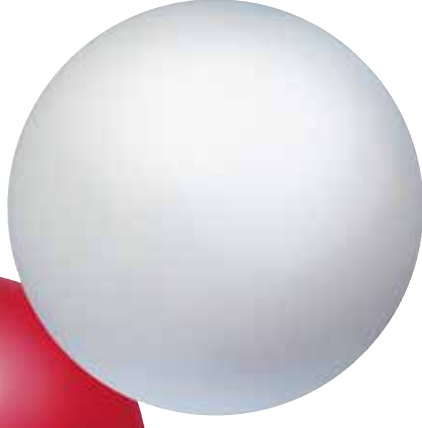


**DIALAB<sup>®</sup>**

**50 years of excellence 1972-2022**



# **PRODUCT RANGE**

**dialab.at**



DIALAB

DIALAB

DIALAB

DIALAB  
M55

# DIALAB®



## 50 Years of Experience

DIALAB® GmbH was founded in 1972.

The company with its headquarter located south of Vienna in Wiener Neudorf, Austria, is a manufacturer and distributor of Diagnostics and Laboratory Equipment.

We dedicate ourselves exclusively to supporting the clinical laboratory and supplying a complete range of products. Including five subsidiaries located in China, the Czech Republic, Hungary and Serbia we are a total of over 120 employees.

## Active Around the Globe

We are engaged in business relations worldwide. Presently, DIALAB® supplies its wide product range to more than 100 countries around the world.

## Quality

We maintain a quality management system certified according to ISO 13485:2016. The majority of products are CE marked according to Directive 98/79/EC.

## OEM/Bulk

We offer different options for our OEM partners. Generally, DIALAB® can provide reagents in bulk, customised kits, labelled and unlabelled vials.

## Product Training

We offer training programs in our headquarter in Wiener Neudorf in order to support our customers.

## Customer Service, Orders and Pricing

Contact your DIALAB® Distributor or contact us directly at:

**E-mail:** [office@dialab.at](mailto:office@dialab.at)  
**Website:** [www.dialab.at](http://www.dialab.at)  
**Phone:** +43-2236-660910-0  
**Fax:** +43-2236-660910-30/31

## Warranty

DIALAB® shall warrant that products perform according to the procedures described in the instruction inserts/manuals accompanying the products. Changes or modifications of the products may adversely affect the stated performances. DIALAB® shall not be liable for any damages arising out of incorrect use of the products.









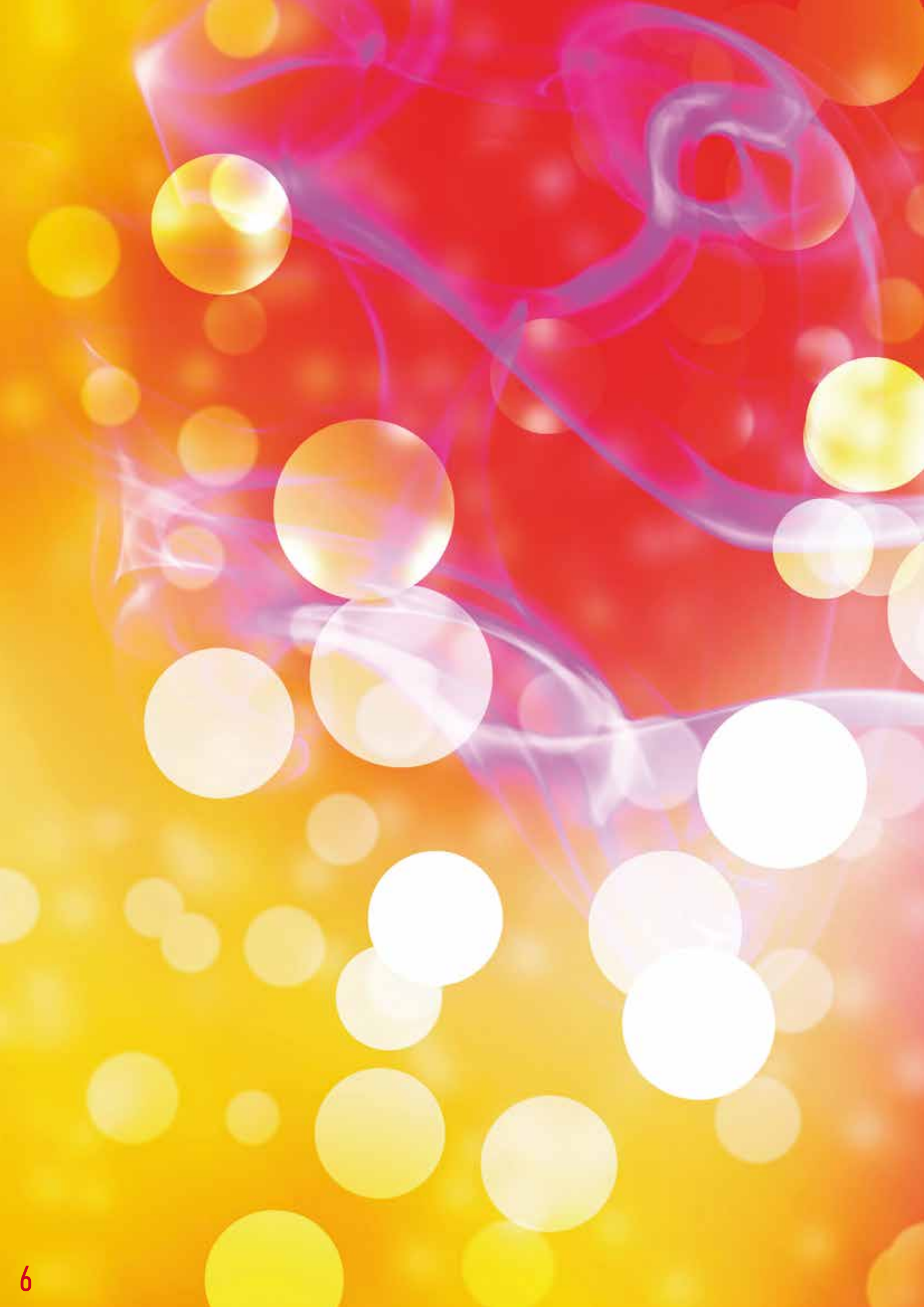




# INDEX

<b>CLINICAL CHEMISTRY</b>	<b>6</b>
<b>PROTEIN IMMUNOASSAYS</b>	<b>12</b>
<b>DOA LIQUID</b>	<b>18</b>
<b>DIAQUICK RAPID TESTS</b>	<b>22</b>
<b>SEROLOGY</b>	<b>28</b>
<b>ELISA TESTS</b>	<b>32</b>
<b>BLOOD GROUPING &amp; RHESUS TYPING</b>	<b>38</b>
<b>COAGULATION &amp; FIBRINOLYSIS</b>	<b>42</b>
<b>HAEMATOLOGY</b>	<b>46</b>
<b>URINE STRIPS</b>	<b>52</b>
<b>INSTRUMENTS</b>	<b>56</b>





# CLINICAL CHEMISTRY



# CLINICAL CHEMISTRY

## Reagents



	Method	Configuration	CE
<b>Adenosine Deaminase (ADA)</b>	Enzymatic, colorimetric	2 reagents	✓
<b>Albumin</b>	BCG	Single reagent	✓
<b>Alkaline Phosphatase</b>	opt. DGKC	2 reagents	✓
<b>Alkaline Phosphatase</b>	mod. IFCC	2 reagents	✓
<b>Ammonia</b>	Enzymatic, UV	Single reagent	✓
<b>alpha-Amylase</b>	CNP-G3	Single reagent	✓
<b>alpha-Amylase</b>	mod. IFCC	2 reagents	✓
<b>alpha-Amylase Pancreatic</b>	ET-G7PNP	2 reagents	✓
<b>Bile Acids</b>	Enzymatic cycling	2 reagents	✓
<b>Bilirubin Auto Direct</b>	DCA	2 reagents	✓
<b>Bilirubin Auto Total</b>	DCA	2 reagents	✓
<b>Bilirubin Direct</b>	Jendrassik Grof	2 reagents	✓
<b>Bilirubin Total</b>	Jendrassik Grof	2 reagents	✓
<b>Calcium</b>	Arsenazo	Single reagent	✓
<b>Calcium</b>	CPC	2 reagents	✓
<b>Carbon Dioxide (CO<sub>2</sub>)</b>	PEP-C	Single reagent	✓
<b>Chloride</b>	Mercuric thiocyanate	Single reagent	✓
<b>Cholesterol</b>	CHOD-PAP	Single reagent	✓
<b>Cholesterol HDL Direct</b>	Enzymatic	2 reagents	✓
<b>Cholesterol HDL Precipitant</b>	Precipitation	Single reagent	✓
<b>Cholesterol LDL Direct</b>	Enzymatic	2 reagents	✓
<b>Cholesterol LDL Precipitant</b>	Precipitation	Single Reagent	✓
<b>Cholinesterase</b>	opt. DGKC	2 reagents	✓
<b>CK-MB</b>	opt. DGKC / IFCC	2 reagents	✓
<b>CK-NAC</b>	opt. DGKC / IFCC	2 reagents	✓
<b>Copper</b>	3,5-DiBr-PAESA	Single reagent	✓
<b>Creatinine</b>	mod. Jaffe	2 reagents	✓
<b>Creatinine</b>	Enzymatic, PAP	2 reagents	✓
<b>Ethanol</b>	Enzymatic, UV	2 reagents	✓
<b>Fructosamine</b>	NBT	2 reagents	✓
<b>G6PDH</b>	UV, kinetic	2 reagents*	✓
<b>G6PDH Lyse Reagent</b>	for G6PDH, UV, kinetic	Single reagent	✓
<b>gamma-GT</b>	Szasz, stand. to IFCC	2 reagents	✓
<b>GLDH</b>	DGKC	2 reagents	✓
<b>Glucose</b>	GOD-PAP	Single reagent	✓
<b>Glucose</b>	Hexokinase	2 reagents	✓
<b>GOT (AST)</b>	mod. IFCC	2 reagents	✓
<b>GPT (ALT)</b>	mod. IFCC	2 reagents	✓

\*powder



# CLINICAL CHEMISTRY

## Reagents



	Method	Configuration	CE
HbA1c Direct	Immunturbidimetric	2 reagents	✓
alpha-HBDH	opt. DGKC	2 reagents	✓
Hemoglobin Total	Cyanmethemoglobin	Single reagent	✓
Homocysteine	Enzymatic cycling	2 reagents	✓
beta-Hydroxybutyrate	Enzymatic	2 reagents	✓
Iron	Ferene	2 reagents	✓
Lactate	Enzymatic, UV	2 reagents	✓
LDH-L	IFCC	2 reagents	✓
LDH-P	opt. DGKC	2 reagents	✓
Lipase	Enzymatic, colorimetric	2 reagents	✓
Lithium	Enzymatic	2 reagents	✓
Magnesium	Xylidyl blue	Single reagent	✓
NEFA	ACOD-PAP	2 reagents	✓
Phosphorus Inorganic	Molybdate	Single reagent	✓
Potassium	Enzymatic	2 reagents	✓
Protein Total	Biuret	2 reagents	✓
Protein Total Mono	Biuret	Single reagent	✓
Protein Total in Urine/CSF	Pyrogallol red	Single reagent	✓
Pyridoxal-5'-Phosphate	for GOT (AST) and GPT (ALT)	Single reagent	✓
Sodium	Enzymatic	2 reagents	✓
Triglycerides	GPO-PAP	Single reagent	✓
UIBC	Ferene	2 reagents	✓
Urea	Urease/colorimetric	3 reagents	✓
Urea UV Auto	Urease/GLDH	2 reagents	✓
Uric Acid AOX	Enzymatic, colorimetric	2 reagents	✓
Uric Acid TBHBA	Enzymatic, colorimetric	2 reagents	✓
Zinc	5-Br-PAPS	Single reagent	✓



# CLINICAL CHEMISTRY

## Standards



	Concentration	CE
Albumin	5 g/dL	✓
Ammonia	approx. 250 µmol/L	✓
Bile Acids	50 µmol/L	✓
Calcium	10 mg/dL	✓
Chloride	100 mmol/L	✓
Cholesterol	200 mg/dL	✓
CO <sub>2</sub>	30 mmol/L	✓
Copper	100 µg/dL	✓
Creatinine	2 mg/dL	✓
Glucose	100 mg/dL	✓
beta-Hydroxybutyrate	1 mmol/L	✓
Iron	100 µg/dL	✓
Lithium	3 level set	✓
Magnesium	2 mg/dL	✓
NEFA	1 mmol/L	✓
Phosphorus	5 mg/dL	✓
Potassium	2 level set	✓
Protein Total	5 g/dL	✓
Protein Total in Urine/CSF	Urine: 1300 mg/L, CSF: 1100 mg/L	✓
Sodium	2 level set	✓
Triglycerides	200 mg/dL	✓
Urea	50 mg/dL	✓
Uric Acid	6 mg/dL	✓
Zinc	200 µg/dL	✓



# CLINICAL CHEMISTRY

## Calibrators



	Description	CE
<b>Diacal Auto*</b>	multi calibration serum	✓
<b>Diacal Lipids*</b>	lipid calibration plasma	✓
<b>Diacal CK-MB*</b>	1 level	✓
<b>ADA*</b>	1 level	✓
<b>Ethanol</b>	2 level set	✓
<b>G6PDH*</b>	1 level	✓
<b>Hemoglobin Total*</b>	1 level	✓
<b>HbA1c Direct*</b>	5 level series	✓
<b>HDL-Cholesterol*</b>	1 level	✓
<b>LDL-Cholesterol*</b>	1 level	✓
<b>Homocysteine</b>	5 level set	✓

\*lyophilised

## Controls

	Description	CE
<b>Diacon N*</b>	multi control serum, normal	✓
<b>Diacon P*</b>	multi control serum, abnormal	✓
<b>Diacon Lipids*</b>	lipid control serum, normal	✓
<b>Diacon Lipids High*</b>	lipid control serum, abnormal	✓
<b>Diacon Urine</b>	multi control urine, level 1 / level 2	✓
<b>ADA*</b>	2 level set	✓
<b>Ammonia</b>	2 level set	✓
<b>CO<sub>2</sub></b>	1 level	✓
<b>Ethanol</b>	2 level set	✓
<b>G6PDH*</b>	3 level set	✓
<b>HbA1c Direct*</b>	2 level set	✓
<b>Hemoglobin Total*</b>	3 level set	✓
<b>Homocysteine</b>	4 level set	✓
<b>Lithium*</b>	2 level set	✓
<b>Potassium*</b>	2 level set	✓

\*lyophilised





# PROTEIN IMMUNOASSAYS



# PROTEIN IMMUNOASSAYS

## Reagents



	Configuration	CE
alpha-1 Acid Glycoprotein	Ab Reagent + Buffer	✓
alpha-1 Antitrypsin	Ab Reagent + Buffer	✓
alpha-1 Microglobulin	Latex Reagent + Buffer	✓
alpha-2 Macroglobulin	Ab Reagent + Buffer	✓
Antithrombin III	Ab Reagent + Buffer	✓
APO A1	Ab Reagent + Buffer	✓
APO B	Ab Reagent + Buffer	✓
ASO	Latex Reagent + Buffer	✓
beta-2 Microglobulin	Latex Reagent + Buffer	✓
C1 Esterase Inhibitor	Ab Reagent + Buffer	✓
Ceruloplasmin	Ab Reagent + Buffer	✓
Complement C3	Ab Reagent + Buffer	✓
Complement C4	Ab Reagent + Buffer	✓
CRP	Ab Reagent + Buffer	✓
CRP HS	Latex Reagent + Buffer	✓
CRP Uhs	Latex Reagent + Buffer	✓
Cystatin C	Latex Reagent + Buffer	✓
D-Dimer	Latex Reagent + Buffer	✓
Ferritin	Latex Reagent + Buffer	✓
Ferritin Auto	Latex Reagent + Buffer	✓
Fibrinogen	Ab Reagent + Buffer	✓
Haptoglobin	Ab Reagent + Buffer	✓
HbA1c Direct	Ab Reagent + Latex Reagent	✓
Hemolysis Reagent		✓
IgA	Ab Reagent + Buffer	✓
IgE	Latex Reagent + Buffer	✓
IgG	Ab Reagent + Buffer	✓
IgM	Ab Reagent + Buffer	✓
Kappa Light Chain	Ab Reagent + Buffer	✓
Lambda Light Chain	Ab Reagent + Buffer	✓
Lp(a)	Latex Reagent + Buffer	✓
Microalbumin	Ab Reagent + Buffer	✓
Myoglobin	Latex Reagent + Buffer	✓
Prealbumin	Ab Reagent + Buffer	✓
RF	Ab Reagent + Buffer	✓
Transferrin	Ab Reagent + Buffer	✓

# PROTEIN IMMUNOASSAYS

## Calibrators



	Description	CE
alpha-1 Microglobulin	1 level	✓
APO A1/B*	1 level	✓
ASO	low / high / super high	✓
beta-2 Microglobulin	4 level series	✓
CRP	low / high / super high / 5 level series	✓
CRP HS	1 level	✓
CRP Uhs	5 level series, universal / high sensitivity range	✓
Cystatin C	1 level	✓
D-Dimer*	5 level series	✓
Ferritin	5 level series	✓
Ferritin Auto	5 level series	✓
Fibrinogen*	1 level	✓
HbA1c Direct*	5 level series	✓
IgE	5 level series	✓
Lp(a)	low / high / 4 level series	✓
Microalbumin	high / 5 level series	✓
Myoglobin	4 level series	✓
Pediatric	1 level	✓
Protein	low / high / 5 level series	✓
RF	low / high / super high / 5 level series	✓
Transferrin	5 level series	✓

\*lyophilised





# PROTEIN IMMUNOASSAYS

## Controls



	Description	CE
alpha 1-Microglobulin	1 level	✓
APO A1/B*	1 level	✓
ASO	1 level	✓
beta 2-Microglobulin	1 level	✓
CRP	low / high	✓
CRP HS	1 level	✓
CRP Uhs	2 level set, universal / high sensitivity range	✓
Cystatin C	2 level set	✓
D-Dimer*	2 level set	✓
Ferritin	low / high	✓
Ferritin Auto	low / high	✓
Fibrinogen*	1 level	✓
HbA1c Direct*	2 level set	✓
IgE	low / high	✓
Lp(a)	low / high	✓
Microalbumin	1 level	✓
Myoglobin	2 level set	✓
Pediatric	1 level	✓
Protein	low / high	✓
RF	1 level	✓
Triple (ASO,CRP,RF)	1 level	✓

\*lyophilised







# DOA LIQUID







# DOA LIQUID

## Reagents



		Sample type	CE
Amphetamine	AMP	Urine	✓
Barbiturate	BAR	Urine	✓
Buprenorphine	BUP	Urine	✓
Benzodiazepine	BZO	Urine	✓
Cocaine	COC	Urine	✓
Exctasy	MDMA	Urine	✓
Methamphetamine	MET	Urine	✓
Methadone	MTD	Urine	✓
Opiate	OPI	Urine	✓
Phencyclidine	PCP	Urine	✓
Propoxyphene	PPX	Urine	✓
Cannabinoids / Marihuana	THC	Urine	✓
Spice	JWH-018	Urine	✓
Spice	UR-144	Urine	✓

## Calibrator / Control Sets

		Levels	CE
Amphetamine	AMP	7 level set	✓
Barbiturate	BAR	6 level set	✓
Buprenorphine	BUP	8 level set	✓
Benzodiazepine	BZO	6 level set	✓
Cocaine	COC	7 level set	✓
Exctasy	MDMA	7 level set	✓
Methamphetamine	MET	7 level set	✓
Methadone	MTD	7 level set	✓
Opiate	OPI	7 level set	✓
Phencyclidine	PCP	7 level set	✓
Propoxyphene	PPX	7 level set	✓
Cannabinoids / Marihuana	THC	12 level set	✓
Spice	JWH-018	7 level set	✓
Spice	UR-144	7 level set	✓
DOA Multi-Analyte		7 level set	✓



# DIAQUICK RAPID TESTS





# DIAQUICK RAPID TESTS

## Drugs of Abuse Urine Tests



		Format	CE
Amphetamine	AMP	Cassette / Dipstick	✓
Barbiturates	BAR	Cassette / Dipstick	✓
Buprenorphine	BUP	Cassette	✓
Benzodiazepines	BZO	Cassette / Dipstick	✓
Cocaine	COC	Cassette / Dipstick	✓
Ethylglucuronide	ETG	Cassette	✓
Fentanyl	FYL	Cassette	✓
Spice, Synthetic Marihuana	K2	Cassette	✓
Ketamine	KET	Cassette	✓
Ectasy	MDMA	Cassette / Dipstick	✓
Lysergic Acid Diethylamide	LSD	Cassette	✓
Methamphetamine	MET	Cassette / Dipstick	✓
Methadone	MTD	Cassette / Dipstick	✓
Opiates, Morphine, Heroin	MOP	Cassette / Dipstick, 300 ng/mL	✓
Opiates, Morphine, Heroin	OPI	Cassette, 2000 ng/mL	✓
Phencyclidine	PCP	Dipstick	✓
Oxycodone	OXY	Cassette	✓
Tricyclic Antidepressants	TCA	Cassette	✓
Marihuana / Cannabis	THC	Cassette / Dipstick	✓
Tramadol	TRA	Cassette	✓
6-Monoacetylmorphine	6-MAM	Cassette	✓
Multi-3 Drug	Various combinations	Panel	✓
Multi-4 Drug	Various combinations	Panel	✓
Multi-5 Drug	Various combinations	Panel	✓
Multi-6 Drug	Various combinations	Panel	✓
Multi-7 Drug	Various combinations	Panel	✓
Multi-10 Drug	Various combinations	Panel	✓
DOA Multi-6 Cup			✓

## Drugs of Abuse Saliva Tests

	Method	CE
Alcohol Saliva Strip	Colorimetric saliva test	✓

# DIAQUICK RAPID TESTS

## Infectious Diseases



	Format	Sample Type	CE
<b>Adenovirus</b>	Cassette	Faeces	✓
<b>Chlamydia</b>	Cassette	Cervical   urethral swab / urine	✓
<b>Covid-19 Ag</b>	Cassette	Swab	✓
<b>Dengue Ag/Ab Combo</b>	Cassette	Serum / plasma / whole blood	✓
<b>Dengue IgG/IgM Ab</b>	Cassette	Serum / plasma / whole blood	✓
<b>Dengue NS1 Ag</b>	Cassette	Serum / plasma / whole blood	✓
<b>H. pylori Ab</b>	Cassette	Serum / plasma / whole blood	✓
<b>H. pylori Stool Ag</b>	Cassette	Faeces	✓
<b>Influenza A/B</b>	Dipstick	Nasal   throat swab	✓
<b>Malaria P.f.</b>	Cassette	Whole blood	✓
<b>Malaria P.f./Pan</b>	Cassette	Whole blood	✓
<b>Mononucleosis</b>	Cassette	Serum / plasma / whole blood	✓
<b>Rotavirus</b>	Cassette	Faeces	✓
<b>Rota / Adeno Combi</b>	Cassette	Faeces	✓
<b>S. typhi IgG/IgM Ab</b>	Cassette	Serum / plasma / whole blood	✓
<b>S. typhi /paratyphi Ag</b>	Cassette	Faeces / serum / plasma / whole blood	✓
<b>Strep. A</b>	Cassette / Dipstick	Throat swab	✓
<b>Syphilis</b>	Cassette / Dipstick	Serum / plasma / whole blood	✓

## AIDS, Hepatitis

	Format	Sample Type	CE
<b>HBsAb</b>	Dipstick	Serum / plasma	
<b>HBsAg</b>	Cassette / Dipstick	Serum / plasma / whole blood	
<b>HCV Ab</b>	Cassette	Serum / plasma / whole blood	
<b>HIV Ab</b>	Cassette	Serum / plasma / whole blood	
<b>HIV Triline 1/2/0</b>	Cassette	Serum / plasma / whole blood	

# DIAQUICK RAPID TESTS

## ToRCH



	Format	Sample Type	CE
<b>Toxoplasma IgM</b>	Cassette	Serum / plasma	✓
<b>Toxoplasma IgG/IgM</b>	Cassette	Serum / plasma	✓
<b>Rubella IgM</b>	Cassette	Serum / plasma	✓
<b>CMV IgM</b>	Cassette	Serum / plasma	✓
<b>HSV 1/2 IgM</b>	Cassette	Serum / plasma	✓

## Pregnancy / Fertility

	Format	Sample Type	CE
<b>hCG</b>	Cassette / Dipstick	Urine	✓
<b>hCG Combo</b>	Cassette / Dipstick	Urine / serum	✓
<b>LH</b>	Cassette / Dipstick	Urine	✓

## Tumour Markers

	Format	Sample Type	CE
<b>AFP</b>	Cassette	Serum / plasma / whole blood	✓
<b>CEA</b>	Cassette	Serum / plasma / whole blood	✓
<b>FOB</b>	Cassette	Faeces	✓
<b>FOB-TRF Combi</b>	Cassette	Faeces	✓
<b>PSA</b>	Cassette	Serum / plasma / whole blood	✓

## Cardiac Markers

	Format	Sample Type	CE
<b>Troponin I</b>	Cassette	Serum / plasma / whole blood	✓
<b>Troponin T</b>	Cassette	Serum / plasma / whole blood	✓
<b>Cardiac Combo</b>	Cassette	Serum / plasma / whole blood	✓

## Others

	Format	Sample Type	CE
<b>CRP</b>	Cassette	Serum / plasma / whole blood	✓
<b>Microalbumin</b>	Dipstick	Urine	✓







# SEROLOGY





# SEROLOGY

## Latex- & Haemagglutination



	Parameter	CE
ASO	Anti-Streptolysin O Ab	✓
CRP	C-reactive Protein	✓
IM	Infectious Mononucleosis heterophile Ab	✓
RF	Rheumatoid Factor	✓
Toxoplasma gondii	Anti-T.gondii Ab	
Waler Rose	Rheumatoid Factor	✓

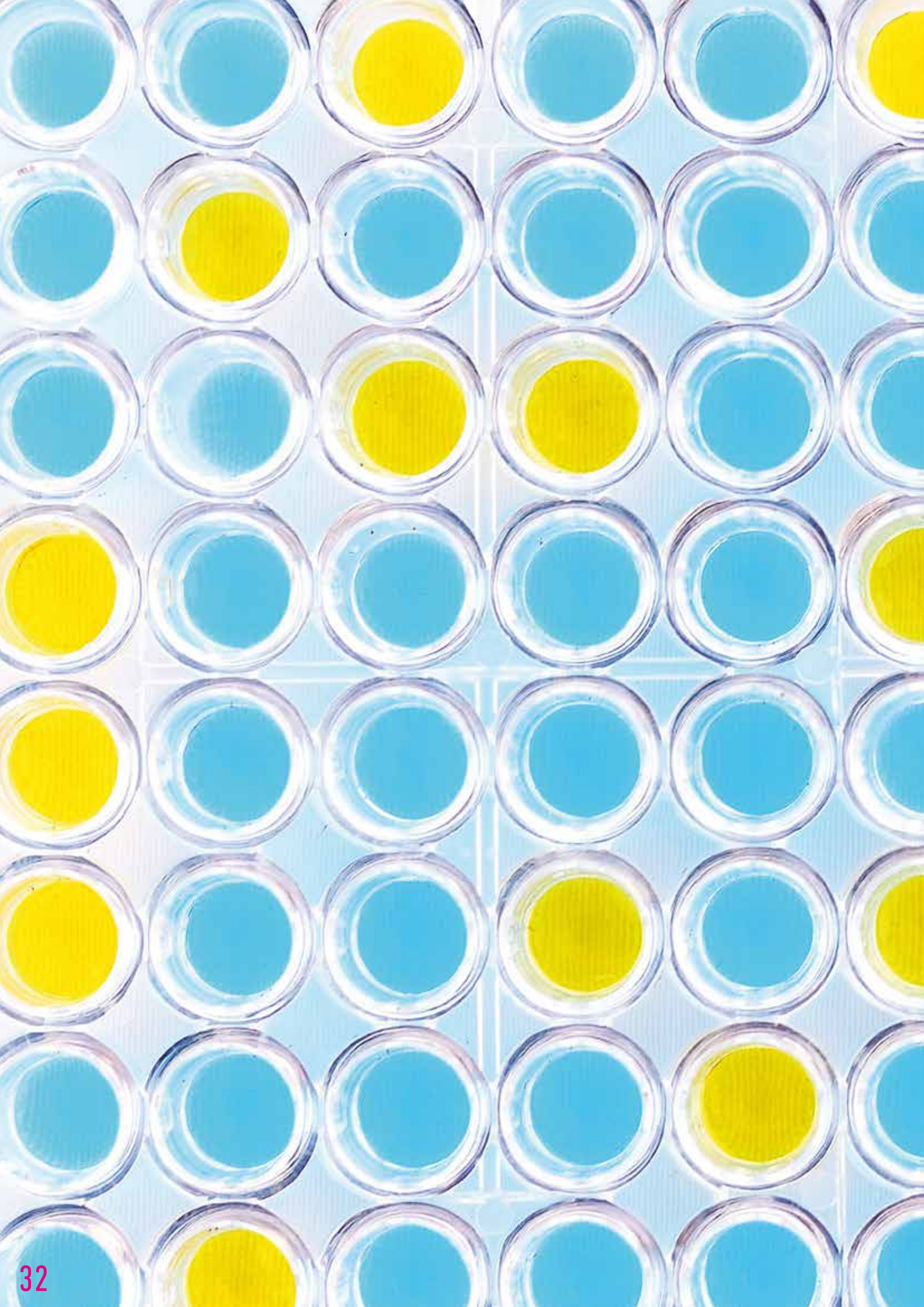
## Bacterial Agglutination

	Parameter	CE
Brucella abortus	Anti-Brucella Ab	✓
Proteus OX19	Anti-Rickettsia Ab	✓
Proteus OX2	Anti-Rickettsia Ab	✓
Proteus OXK	Anti-Rickettsia Ab	✓
Rose Bengal	Anti-Brucella Ab	✓
Salmonella paratyphi AH	Anti-Salmonella Ab	✓
Salmonella paratyphi AO	Anti-Salmonella Ab	✓
Salmonella paratyphi BH	Anti-Salmonella Ab	✓
Salmonella paratyphi BO	Anti-Salmonella Ab	✓
Salmonella paratyphi CH	Anti-Salmonella Ab	✓
Salmonella paratyphi CO	Anti-Salmonella Ab	✓
Salmonella typhi H	Anti-Salmonella Ab	✓
Salmonella typhi O	Anti-Salmonella Ab	✓
Salmonella total Kit	8 Salmonella reagents, optional controls	✓
Polyvalent Controls	Positive / negative, for bacterial agglutination assays	✓

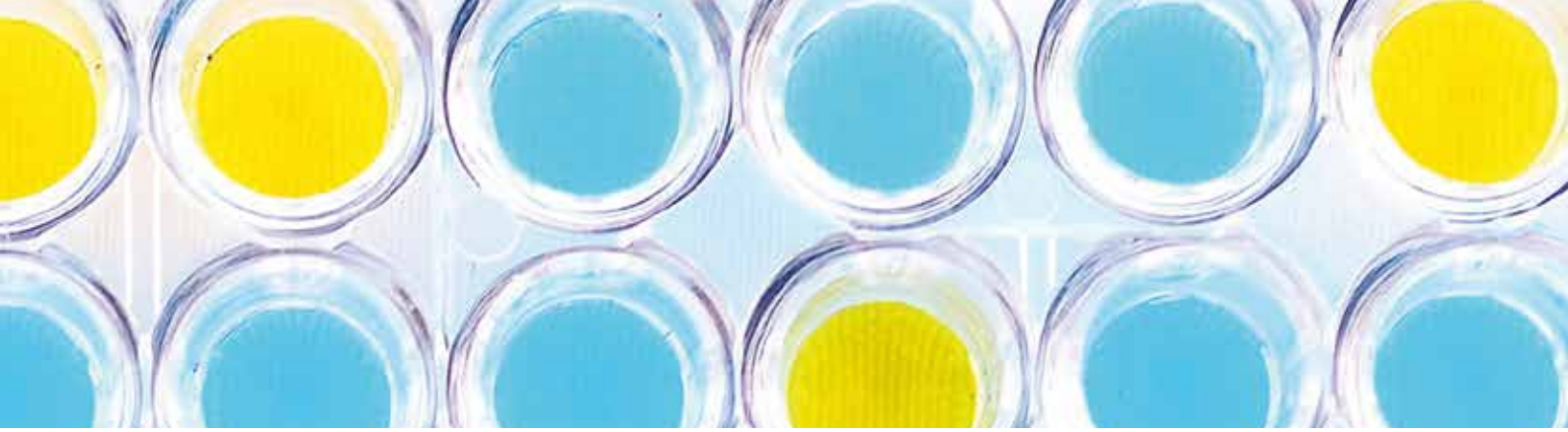
## Syphilis

	Parameter	CE
Syphilis RPR	Indirect Syphilis Test (Reagins)	✓
Syphilis TPHA	Anti-T.pallidum Ab	✓
Syphilis VDRL	Indirect Syphilis Test (Reagins)	✓

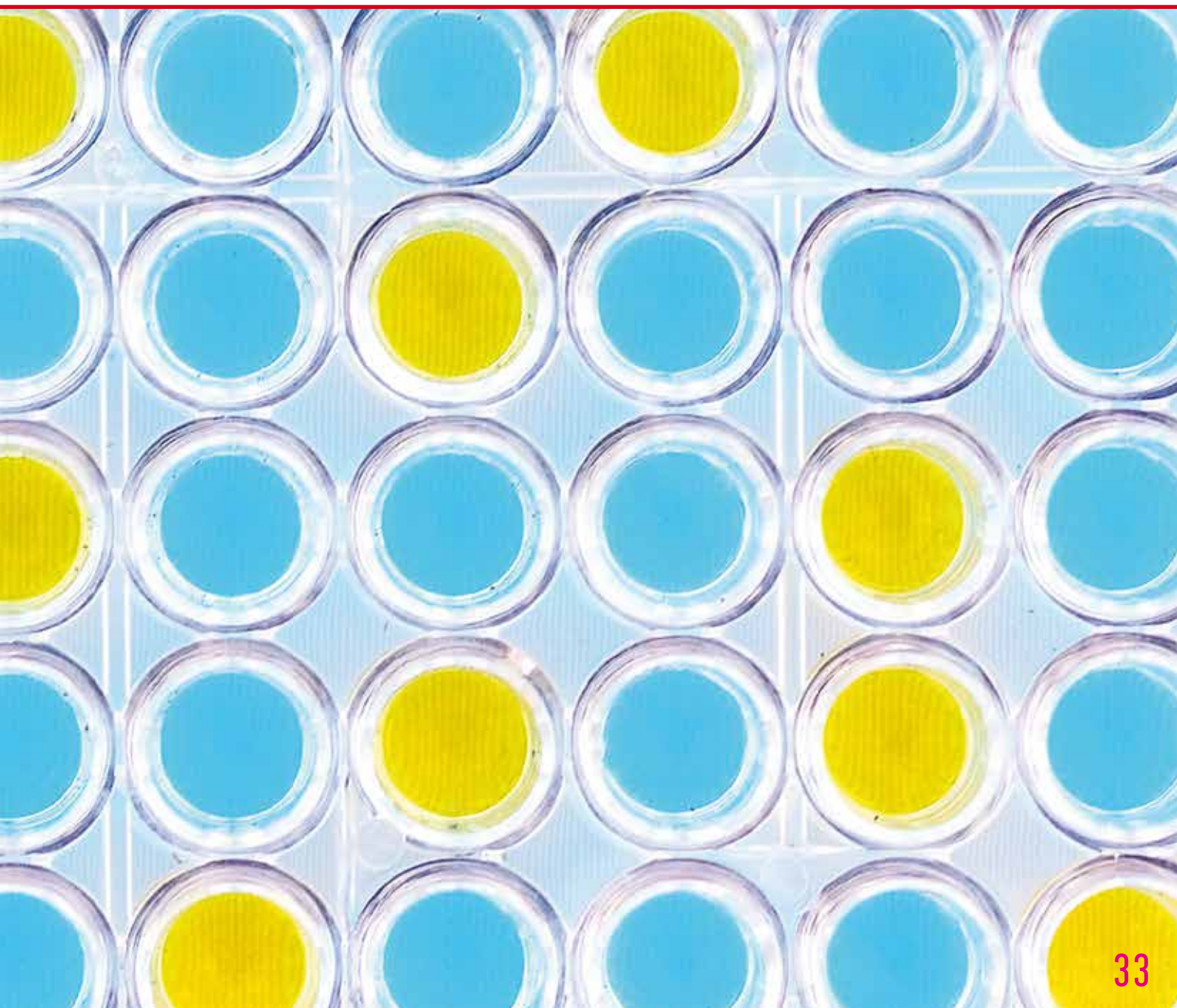








# ELISA TESTS



# ELISA TESTS

## AIDS, Hepatitis



	Method	CE
HAV IgM	Cut-off	
HBcAb	Cut-off	
HBc IgM capture	Cut-off	
HBeAb	Cut-off	
HBeAg	Cut-off	
HBsAb	Cut-off	
HBsAb one step	Quantitative	
HBsAg Sensitive	Cut-off	✓
HCV Ab Sensitive	Cut-off	✓
HIV 1+2 Ab	Cut-off	✓
HIV 1+2 Ag/Ab	Cut-off	✓
HTLV 1+2	Cut-off	

## ToRCH

	Method	CE
CMV IgG	Cut-off	
CMV IgM	Cut-off	
Rubella IgG	Cut-off	
Rubella IgM	Cut-off	
Toxoplasma IgG	Cut-off	
Toxoplasma IgM	Cut-off	



# ELISA TESTS

## Other Infectious Diseases



	Method	CE
Anti-Syphilis Ab	Cut-off	✓
SARS-CoV-2 IgM	Cut-off	✓
SARS-CoV-2 IgG	Cut-off	✓
SARS-CoV-2 Total Ab	Cut-off	✓
SARS-CoV-2 IgG Quantitative	Quantitative	✓

## Fertility

	Method	CE
b-hCG	Quantitative	✓
FSH	Quantitative	✓
LH	Quantitative	✓
Prolactin	Quantitative	✓

## Tumour Markers

	Method	CE
Ferritin	Quantitative	✓
PSA	Quantitative	✓



# ELISA TESTS

## Autoimmune Diseases



	Method	CE
AMA-M2 IgG	Quantitative	✓
ANA Combi 8	Cut-off	✓
ANA Detect	Cut-off	✓
ANA Screen 8	Cut-off	✓
ANA-9-Line Immunoblot 16	Semi-quantitative	✓
ANCA Combi	Quantitative	✓
Anti-beta-2-Glycoprotein I IgG/IgM	Quantitative	✓
Anti-beta-2-Glycoprotein I Screen	Quantitative	✓
Anti-Cardiolipin IgA	Cut-off	✓
Anti-Cardiolipin IgG/IgM	Quantitative	✓
Anti-Cardiolipin Screen	cut-off	✓
Anti-CRA	Quantitative	✓
Anti-DGP IgA	Quantitative	✓
Anti-DGP IgG	Quantitative	✓
Anti-ds DNA Screen	Quantitative	✓
Anti-Gliadin IgA	Quantitative	✓
AntiGliadin IgG	Quantitative	✓
Anti-Insulin	Quantitative	✓
Anti-Intrinsic Factor	Quantitative	✓
Anti-Phospholipid Screen IgG/IgM	Quantitative	✓
Anti-Transglutaminase IgA	Quantitative	✓
Anti-Transglutaminase IgG	Quantitative	✓
Anti-Transglutaminase Screen	Quantitative	✓
ENA-6 Screen	Cut-off	✓
Nucleo-9-Line Immunoblot 08/16	Semi-quantitative	✓
Rheumatoid Factor IgA	Quantitative	✓
Rheumatoid Factor IgG	Quantitative	✓



# ELISA TESTS

## Steroids

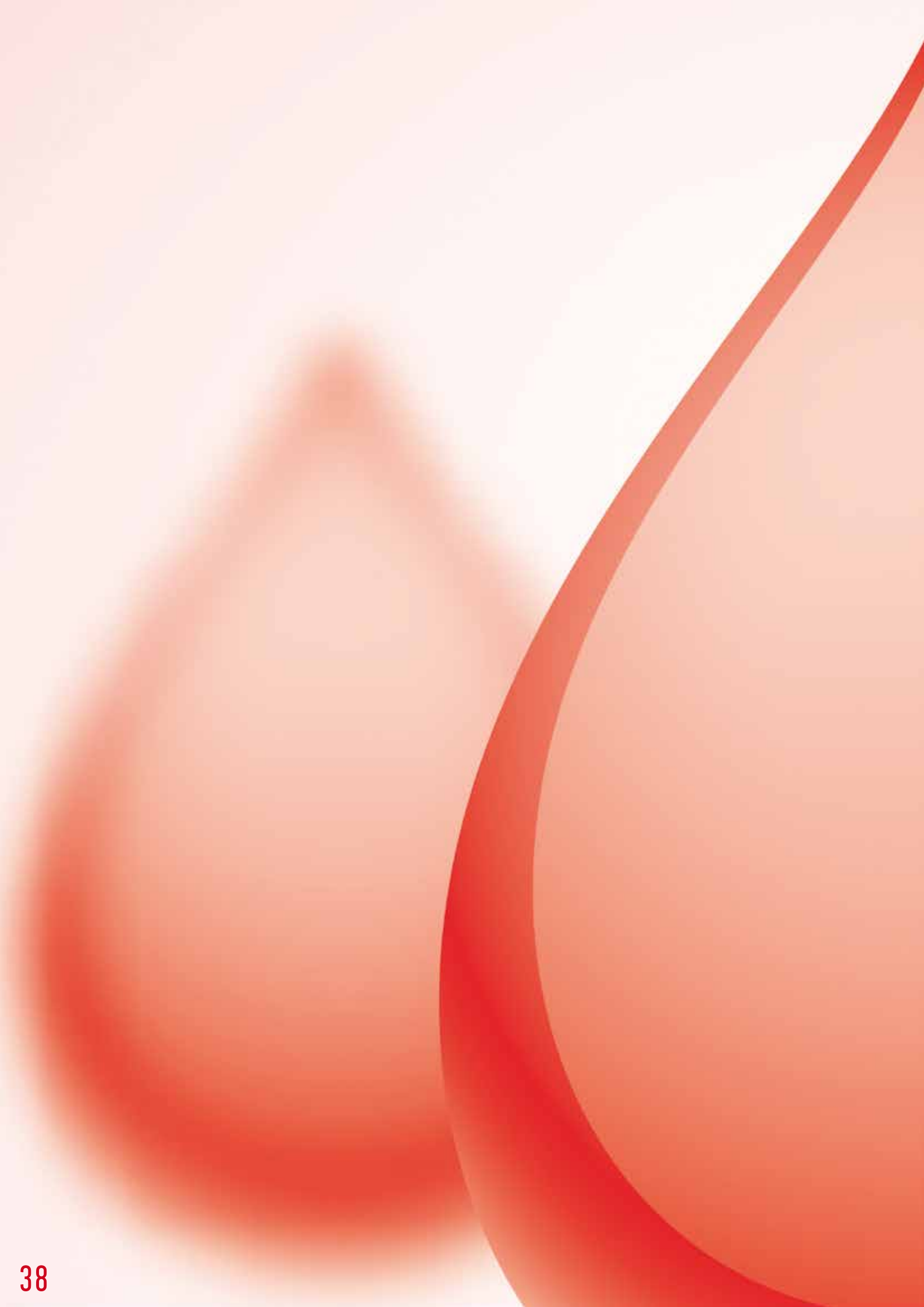


	Method	CE
17-a-OH Progesterone	Quantitative	✓
17-beta-Estradiol	Quantitative	✓
Androstenedione	Quantitative	✓
Cortisol	Quantitative	✓
DHEA-S	Quantitative	✓
Free Testosterone	Quantitative	✓
Progesterone	Quantitative	✓
Testosterone	Quantitative	✓
Total 25-OH Vitamin D	Quantitative	✓

## Thyroids

	Method	CE
Anti-TG IgG	Quantitative	✓
Anti-TPO IgG	Quantitative	✓
FT3	Quantitative	✓
FT4	Quantitative	✓
T3	Quantitative	✓
T4	Quantitative	✓
Thyroglobulin	Quantitative	✓
TSH	Quantitative	✓





# BLOOD GROUPING & RHESUS TYPING







# BLOOD GROUPING & RHESUS TYPING

## ABO & Rhesus Typing



CE

Anti-A, monoclonal	✓
Anti-B, monoclonal	✓
Anti-AB, monoclonal	✓
Anti-D (IgM/IgG), monoclonal	✓
Anti-A1 Lectin	
Anti-C, monoclonal	✓
Anti-E, monoclonal	✓
Anti-c, monoclonal	✓
Anti-e, monoclonal	✓
Anti-Cw, monoclonal	✓

## Rare Blood Grouping Reagents

CE

Anti-H Lectin	✓
Anti-k, monoclonal	✓
Anti-K, monoclonal	

## Auxiliary Reagents

CE

Anti-HG, polyspecific / monoclonal	✓
BSA 22%	✓
BSA 30%	✓
LISS Solution	✓
Papain	✓





# COAGULATION & FIBRINOLYSIS







# COAGULATION & FIBRINOLYSIS

## Reagents



	Description	CE
Thromboplastin (PT) liquid	ISI 1.2-1.35	✓
Thromboplastin (PT)-S	ISI 1.15-1.3	✓
APTT-EA liquid	Ellagic acid activated	✓
APTT-S liquid	Silica activated	✓
Fibrinogen-Kit	Human, clotting	✓
Human Thrombin	For FIB, clotting	✓
Thrombin Time (TT), human	Human, clotting	✓
D-Dimer Latex Agglutination Kit	Manual, semi-quantitative	✓
D-Dimer for DIAcheck & Coalyser	Immunoturbidimetric	✓
Deficient Plasma Factor II	For PT	✓
Deficient Plasma Factor V	For PT	✓
Deficient Plasma Factor VII	For PT	✓
Deficient Plasma Factor VIII	For APTT	✓
Deficient Plasma Factor IX	For APTT	✓
Deficient Plasma Factor X	For PT	✓
Deficient Plasma Factor XI	For APTT	✓
Deficient Plasma Factor XII	For APTT	✓

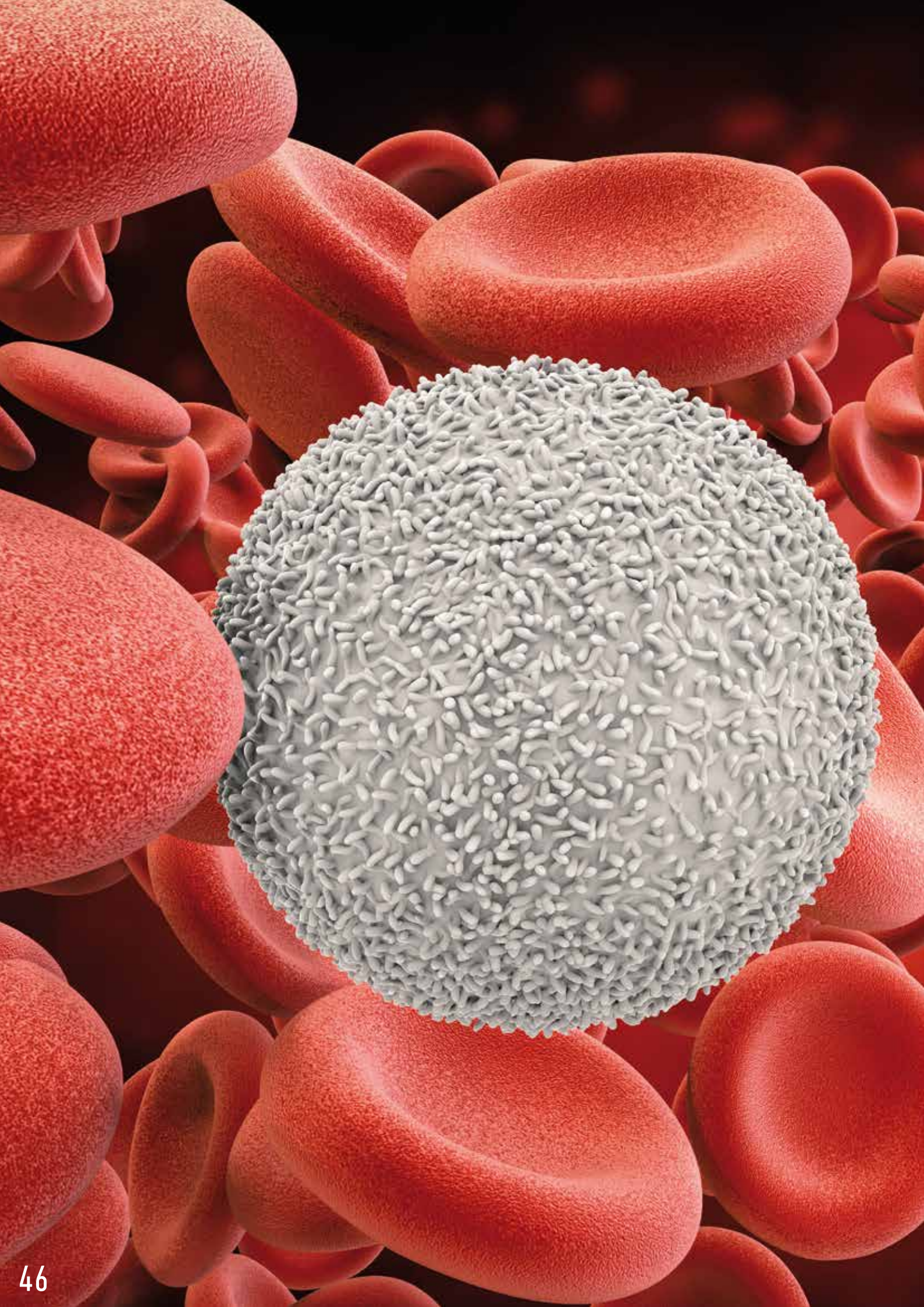
## Auxiliary Reagents

	Description	CE
Calcium Chloride, 0.025 M	For APTT-S	✓
Calcium Chloride, 0.020 M	For APTT-EA	✓
Imidazole Buffered Saline	For FIB	✓

## Control & Reference Plasmas

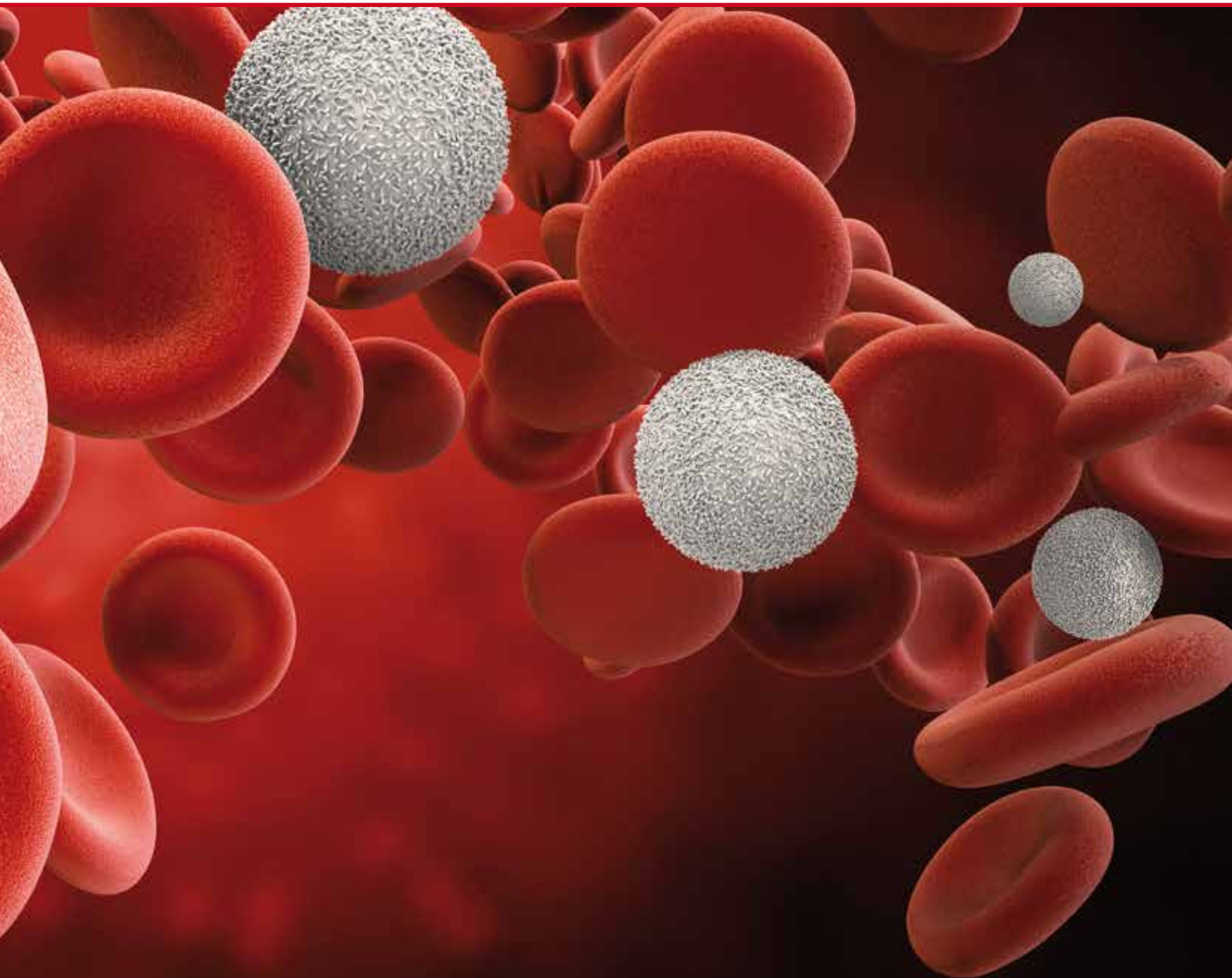
	Description	CE
Normal Coagulation Reference Plasma	For PT, FIB	✓
Normal Coagulation Control Plasma	For PT, APTT, FIB, TT	✓
Abnormal Coagulation Control Plasma	For PT, APTT, FIB	✓
Special Calibration Plasma	For Deficient Plasma Factors	✓
Special Control Plasma Normal	For Deficient Plasma Factors	✓
Special Control Plasma Abnormal	For Deficient Plasma Factors	✓







# HAEMATOLOGY







# HAEMATOLOGY

## DLB5



### 5-diff Haematology Analyser (HUM / VET)

- 
- 1 Analyser - 2 functions:  
switch between 3-diff and 5-diff
- 
- 18 parameters + 3 histograms (3-diff):  
WBC, RBC, THR, Hb, Hct, Lym%, Lym#, Mon%, Mon#,  
Gra%, Gra#, MCV, MCH, MCHC, RDW, MPV, Pct, PDW
- 
- 21 parameters + 4 histograms (5-diff):  
WBC, RBC, THR, Hb, Hct, Lym%, Lym#, Mon%, Mon#,  
Neu%, Neu#, Eo%, Eo#, Ba%, MCV, MCH, MCHC, RDW,  
MPV, Pct, PDW
- 
- CE marked
- 



## DLB3

### 3-diff Haematology Analyser (HUM / VET)

- 
- 18 parameters + 3 histograms:  
WBC, RBC, THR, Hb, Hct, Lym%, Lym#, Mon%, Mon#,  
Gra%, Gra#, MCV, MCH, MCHC, RDW, MPV, Pct, PDW
- 
- CE marked
- 



# HAEMATOLOGY

## Human line



Reagents	Description	CE
Diadiff	for DLB5 and DLB3	✓
Dialuent	for DLB5 and DLB3	✓
Diatergent	for DLB5 and DLB3	✓
Dialys-E0	for DLB5	✓
Rinse Concentrate	for DLB5 and DLB3	✓
DLB3 Pack 125H	3-diff	✓
DLB5 Pack 125H	5-diff	✓

## Veterinary line

Reagents	Description
Diadiff VET	for DLB5 VET
Dialuent VET	for DLB5 VET and DLB3 VET
Diatergent VET	for DLB5 VET and DLB3 VET
Dialys-E0 VET	for DLB5 VET
Rinse Concentrate	for DLB5 VET and DLB3 VET
DLB3 Pack 125V	3-diff
DLB5 Pack 125V	5-diff



# HAEMATOLOGY

## General Features for DLB5 and DLB3



- Results in 50 seconds (3-diff) or 80 seconds (5-diff)
- For venous and capillary blood
- Only 10 – 30 µL blood volume
- No warm-up, temperature independent
- Colour display
- Printer: DLB5 internal, DLB3 external (not included)
- Connection to external computer, keyboard and barcode reader
- 5-diff: 4 reagents plus Rinse, 3-diff: 3 reagents plus Rinse
- Blood Clot Micro Filter
- Unique preservation solution » no frequent rinsing
- Electromagnetic valves » less service needed
- Cleaning every 3 months only
- Service once a year
- Languages: German, English, French (Spanish on request)
- Veterinary instrument: 6 species by default, 2 species freely selectable





# URINE STRIPS





# URINE STRIPS

## Regular Strips



	Parameters	CE
Urine Strip 1	Glu	✓
Urine Strip 2	Glu, Ket	✓
Urine Strip 2A	Glu, Pro	✓
Urine Strip 2MC	Mal, Cre	✓
Urine Strip 3A	Glu, pH, Pro	✓
Urine Strip 4	Glu, pH, Ket, Pro	✓
Urine Strip 4SG	Glu, SG, pH, Pro	✓
Urine Strip 5	Glu, pH, Ket, Pro, Blo	✓
Urine Strip 9	Glu, Bil, Ket, SG, Blo, pH, Pro, Uro, Nit	✓
Urine Strip 10C	Glu, Bil, Ket, SG, Blo, pH, Pro, Uro, Nit, Leu	✓
Urine Strip 11	Glu, Bil, Ket, SG, Blo, pH, Pro, Uro, Nit, Leu, Asc	✓
Urine Strip 13	Glu, Bil, Ket, SG, Blo, pH, Pro, Uro, Nit, Leu, Asc, Mal, Cre	✓

## Strip with Mesh Technology

	Parameters	CE
Urine Strip 10ME	SG, pH, Leu, Nit, Pro, Glu, Ket, Uro, Bil, Blo	✓

## Control

	Parameters	CE
Urine Comby Control	Control set for the quality control of urine strips and analysers	✓





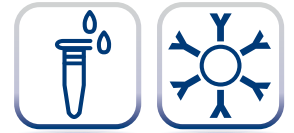


# INSTRUMENTS



# INSTRUMENTS

## Photometer DTN-405



---

Semiautomatic photometer

---

Flow-cell or cuvette mode

---

Endpoint and kinetic tests

---

Internal thermal printer

---

Photometer with rotating filter wheel

---

5 standard filters: 340, 405, 505, 546, 578 nm

---

3 free slots for optional filters

---

Up to 60 methods programmable

---

30  $\mu$ L flow-cell

---

Tungsten halogen lamp

---

6" LCD display

---

CE marked

---



## Photometer DTN-510K

---

Semiautomatic photometer

---

Flow-cell or cuvette mode

---

Endpoint and kinetic tests

---

Internal thermal printer

---

Photometer with rotating filter wheel

---

7 standard filters: 340, 405, 450, 500, 546, 578, 670 nm

---

1 free slot for optional filters

---

Up to 130 methods programmable

---

30  $\mu$ L flow-cell

---

Tungsten halogen lamp

---

7" color LCD display

---

CE marked

---



# INSTRUMENTS

## Autolyser 100



Fully automated chemistry analyser

Throughput: Up to 100 tests/hr

Stand alone device with built-in computer (touchscreen)

Photometer with rotating filter wheel

8 standard filters: 340, 405, 450, 510, 546, 578, 630, 670 nm

Tungsten halogen lamp

Disposable reaction cuvettes

Reagent cooling: No

No. of sampling arms: 1 + 1 mixing arm

Barcode readers for sample and reagents: not included

Water & Waste: external containers

CE marked



## Autolyser

Fully automated chemistry analyser

Optional ISE (indirect): Na<sup>+</sup>, Cl<sup>-</sup>, K, Co<sub>2</sub>

Throughput chemistry only: up to 250 tests/hr

Throughput with ISE: up to 220 tests/hr

Operated by external PC (PC not included)

Static photometer with 10 WL (340 - 700 nm)

Optical glass cuvettes with washing system

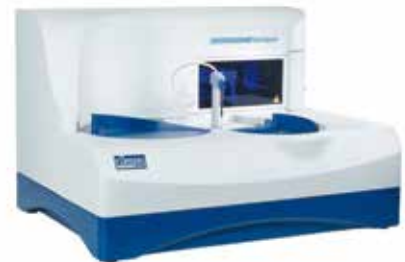
Reagent cooling: Yes

No. of sampling arms: 1

Barcode readers for samples and reagents: optional

Water & Waste: external containers

CE marked



## Autolyser 450

Fully automated chemistry analyser

Optional ISE (direct or indirect): Na<sup>+</sup>, Cl<sup>-</sup>, K, Li

Throughput chemistry only: up to 450 tests/hr

Throughput with ISE: up to 690 tests/hr

Operated by external PC (PC not included)

Static photometer (no filter wheel)

14 filters: 340, 380, 405, 436, 478, 510, 546, 578, 600, 630, 660, 700, 740, 800 nm

Optical glass cuvettes with washing system

Reagent cooling: Yes

No. of sampling arms: 3

Barcode readers for samples and reagents: included

Water & Waste: external containers

CE marked





# INSTRUMENTS

## DIAREader ELX 800G



---

Semiautomatic ELISA reader

---

8 reading channels

---

8 positions filter wheel

---

Measuring range from 400 – 750 nm

---

Touchscreen

---

Internal printer

---

CE marked

---



## DIAWasher ELX50

---

Semiautomatic ELISA washer

---

For washing single strips or full plates

---

Up to 100 washer programs storable

---

Wash, prime, rinse and aspiration programs

---

Shaking function

---

Liquid level alarm

---

CE marked

---



## DIALISA 2MP

---

Fully automated 2 plate ELISA system

---

Easy-to-use software

---

Rapid pipetting speed

---

Optional barcode reader (samples)

---

Clot detection

---

CE marked

---



## DIALISA 4MP

---

Fully automated 4 plate ELISA system

---

Rapid pipetting speed

---

Optional barcode reader (samples)

---

Modular construction

---

CE marked

---



# INSTRUMENTS

## DIACheck® C1



- 1 channel coagulometer
- Fully optical measurement (620 nm)
- Clotting, NOAC and immunoturbidimetric assays
- Microvolumes (totally 75 µL)
- External printer optional
- Autostart
- Up to 3 calibrations points
- CE marked



## DIACheck® C2 | C4

- 2 channel / 4 channel coagulometer
- Fully optical measurement (405 nm)
- Clotting, chromogenic, NOAC and immunoturbidimetric assays
- Microvolumes (totally 75 µL)
- External printer optional
- Autostart
- Up to 5 calibration points
- CE marked



## Coalyser

- Fully automated Coagulation Analyser
- Throughput: 137 PT/h, 60 APTT/h
- Measuring volume: min. 150 µL
- Colour touch screen
- Up to 50 methods programmable
- STAT and QC program
- CE marked





# INSTRUMENTS

## Urine Strip Reader 40



- Throughput: 60 tests/h
- Closed system with barcode
- Data memory: 2000 patient results
- Built-in thermal printer
- For all urine strips except 1 parameter & 10ME
- CE marked



## Urine Strip Analyser 500

- Throughput: 500 tests/h
- Large touch screen
- Closed system with barcode
- Data memory: 2000 patient results
- Built-in thermal printer
- For all urine strips except 1 parameter & 10ME
- CE marked





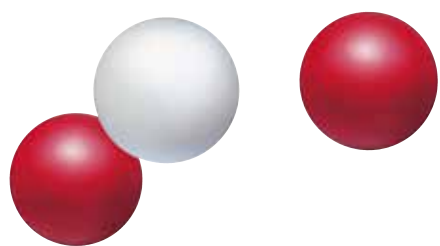


DIALAB

DIALAB  
DIALAB  
DIALAB







### **Austria (Head Office)**

**DIALAB® GmbH**

**IZ NOE-Sued**

**Hondastrasse, Objekt M55**

**A-2351 Wiener Neudorf**

**Phone: +43-2236-66 09 10-0**

**Fax: +43-2236-66 09 10-30**

**E-mail: [office@dialab.at](mailto:office@dialab.at)**

**[www.dialab.at](http://www.dialab.at)**

### **China**

**DIALAB® ZGJ.**

**Building A, Room 211**

**No. 36, Huada Road, Zhangjiagang, Suzhou**

**Jiangsu Province, China**

**Phone: +86-0512-58711903**

**E-mail: [office@dialab.at](mailto:office@dialab.at)**

**[www.dialab.at](http://www.dialab.at)**

### **Czech Republic**

**DIALAB® spol. s r.o.**

**Náměstí Osvoboditelů 1**

**CZ-153 00 Praha 5 - Radotín**

**Phone/Fax: +420-2-579 10 255**

**E-mail: [office@dialab.cz](mailto:office@dialab.cz)**

**[www.dialab.cz](http://www.dialab.cz)**

### **Hungary**

**DIALAB® Kft.**

**Bogáncs u. 8**

**H-1151 Budapest**

**Phone: +36-1-212 25 05**

**Fax: +36-1-335 73 70**

**E-mail: [info@dialab.hu](mailto:info@dialab.hu)**

**[www.dialab.hu](http://www.dialab.hu)**

### **Serbia**

**DIALAB® d.o.o.**

**Carigradska 1**

**RS-11 008 Beograd 12**

**Phone: +381-11-32 38 745**

**Phone/Fax: +381-11-32 42 777**

**E-mail: [dialab@sbb.rs](mailto:dialab@sbb.rs)**